



Sportneer Camping Tent User Manual



Please search“ **Amazon: Sportneer Camping Tent** ”on Youtube.
There is a video for reference of setting up and disassembling the tent.

How to Set Up the Tent



- 1 Remove the tent from storage bag and set it down on a level surface.



- 2 Pull the center of the tent upwards. The middle poles will unfold automatically.



- 3 Unfold the bottom pole, making sure the joints between bottom poles and middle poles are fully extended.



- ④ Lift any of the two top poles to raise the tent, making sure all of the joints are extended when the tent is fully raised. The tent will hold its shape automatically.

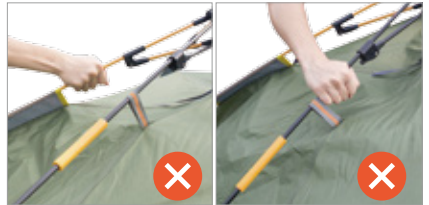


- ⑤ Mount the top cloth on the rainfly. Secure the tent using ground stakes and bungee cords.

How to Disassemble the Tent



- ① Unhook the top cloth, pull up the ground stakes, and remove the bungee cords.



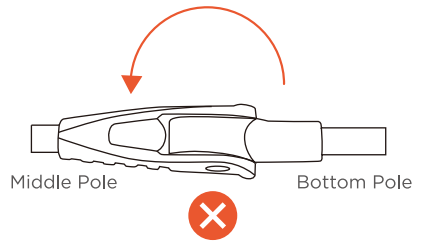
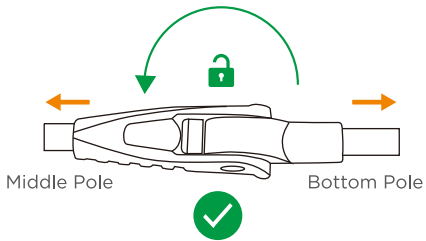
⚠ Warning:

1. Do not hold the positions other than the orange grips and push them aggressively. This may cause damage to the tent.
2. If the tent does not fold, press the short poles quickly and with a bit more force.

- ② Hold the orange grips on the black short poles and push inward quickly. The tent will fold automatically.



- ③ Pull the bottom and middle poles in opposite directions to unlock the joints. Fold the bottom poles inward.



⚠ Warning:

Do not fold the poles when the joints are locked. This will cause damage to the poles and joints.



- ④ When the bottom poles have been properly folded, the tent should look like the illustration above.



- ⑤ Fold the middle poles at the joints until the tent is completely flat.

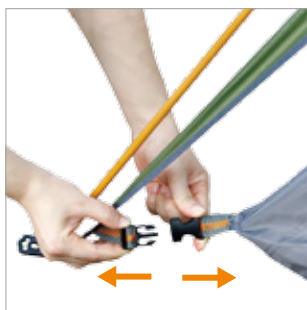


- ⑥ Smooth out the tent, place it and all included parts into the storage bag.

How to Use the Tent as a Sunshade



- ① Follow the assembly instructions to erect the tent.



- ② Unfasten the hooks that connect the innermost layer to the exterior rainfly.



- ③ Fold the inner layer and place it in the storage bag. Enjoy your new sunshade!
(Follow the disassembly instructions to dismantle the sunshade.)

How to Reattach the Innermost Layer



- ① If disassembled, follow the assembly instructions to raise the sunshade.



- ② Lay the innermost layer of the tent underneath the sunshade, making sure the four corners are aligned with the four poles.

Note: Make sure the tent doors are directly underneath the short poles.



- ③ Reattach the innermost layer by looping the eyelets onto the pole's hooks. Make sure that all eyelets have been attached. The tent is now fully assembled.